



blueThing

High quality HD-SDI to DVI-I converter
with audio de-embedder

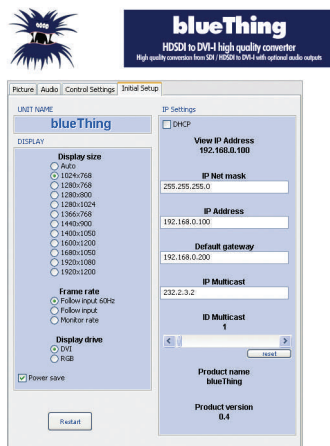
Fantastic image quality

Incoming signals and output resolution are auto-sensed to enable ease of use and to ensure accurate image conformity when viewed on 16:9 and 4:3 screens. The converters' high-quality spatial and temporal video processing deliver excellent frame-rate conversion, scaling and de-interlacing, that results in images having an amazing quality even when used on inexpensive LCD monitors.



Ease of use

In addition to the excellent image quality, if needed, **blueThing** is very easy to configure. An on-screen display allows the unit to be configured without the need of a computer, or alternatively an Ethernet port enables the unit to be configured remotely via web browser without having to install any software.



BlueFish 444 Europe Ltd
TEL: +44 (0)20 8429 2345 WEB: www.bluefish444europe.com EMAIL: info@bluefish444europe.com

blueThing is a compact multi-standard SD/HD-SDI to DVI-I converter designed to meet the increasing demand for HD/SD-SDI monitoring. **blueThing** enables HD-SDI or SD-SDI signals to be viewed using practically any LCD, plasma or projector display, and also features an audio de-embedder with AES/S-PDF digital, line analogue, and headphone audio outputs for audio monitoring.



Compact Size
126 x 102 x 28 mm

Applications

- HD production monitoring
- Post production monitoring
- Presentation
- Projection
- Corporate displays
- HD input to low cost LCD and plasma displays

Key features

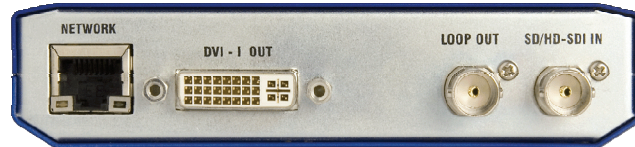
- SD/HD-SDI to DVI-I converter for projector, LCD & plasma displays
- Accepts 525/625 line SD-SDI
- Accepts 720p/1080i/1080p/1080pPsF HD-SDI
- Broadcast based filters for superior image detail
- Proprietary frame rate conversion for superior image motion
- De-interlacing and up/down scaling
- Support for anamorphic SD-SDI inputs
- Auto image sizing for widescreen and standard monitors
- Auto scaling to monitor's native resolution
- Proc-amp, gamma and colour matrix controls
- DVI-D, analogue RGB or HDMI output
- Analogue RGB and HDMI outputs via optional adaptors
- Audio de-embed to AES/SPDIF, line and headphone outputs
- Audio group, pair and output level controls
- Colour temperature control in 100 K steps between 4,500 and 9,500 K
- Remote control via web browser using Ethernet interface
- Local control via on screen display
- Safe area marker insertion
- Test pattern generator



blueThing

High quality HD-SDI to DVI-I converter
with audio de-embedder

Rear connector view



Specification

Video input

1 x SD/HD-SDI	SD-SDI (SMPTE 259M-C) 525/625 HD-SDI (SMPTE 292M) 720P @ 50, 59.94 & 60Hz 1080i @ 50, 59.94 & 60Hz 1080P @ 23.98, 24, 25, 29.97 & 30Hz 1080PsF @ 23.98 & 24Hz
---------------	--

Video output

Temporal conversion	24, 25, 50Hz to 50 or 60Hz
1 x DVI-I with EDID	
Monitor resolutions	1024x768, 1280x768, 1280x1024, 1400x1050, 1600x1200, 1920x1080, 1366 x 768, 1680 x 1050, 1280 x 800; @ 50/60Hz Also 1920 x 1200 @ 60Hz without RGB RGB/HDMI via adapter (available separately)
1 x SD/HD-SDI	Buffered, post equalisation

Audio outputs

1 pair Unbalanced	AES/S-PDIF (RCA connector)
2 channels Unbalanced	Analogue (RCA connector)
1 x stereo	Analogue (3.5mm jack)

Remote control

10/100Base T	Ethernet using RJ45 connector
--------------	-------------------------------

Summary of control features

(*indicates also available via local control on-screen interface)

*Image Width	Auto / Manual
*Manual Width	Manual override of H-size
*Image flip	None / Horizontal / Vertical
*Anamorphic SD	Correction for 16:9 anamorphic SD inputs
*Pattern	Off; Pluge; Colour Bars
*Frame Rate	Auto / 60Hz / Follow Input
*Black Level	Preset; + 100mV
*Luma Gain	Preset; + 6dB
*Chroma Gain	Preset; + 6dB
Colour matrix	Colour temperature selectable between 4500K to 9500K in 100K steps

Gamma	Luminance (black stretch)
Safe area markers	On/off white markers with colour suppress
*Output power down	On/off output mute when no input detected
*IP Address	Manual IP address setting

Audio controls

*Audio select	Group select 1-4 Line out DAC pair select 1-2 Headphone DAC pair select 1-2 AES /SPDIF pair select 1-2
Combined Audio	Adds all 4 channel of de-embedded group and outputs on both left & right analogue channels (gain reduced by 12dB)
*Audio level	Analogue output level 12dBV to -6dBV for 0dBFS
*Headphone volume	Local control

Control interface

IP	Web page resident in unit
Address discovery	DHCP (initially 192.168.0.100)
Local control	4 push buttons (Menu; +; -; Select) Control uses on-screen display

System parameters

Video Processing	>= 8 bit YCbCr or RGB paths throughout
Dimensions	126 x 102 x 28mm
Temperature	0°C to 35 °C operating -20 °C to +70 °C storage
Power	8 - 16VDC via locking 2.1mm Jack AC/DC PSU available separately
Warranty	2 years



Quadrant Digital Solutions
Unit 1 Hawthorn Road
Castle Donington
Derby
DE74 2QR
Sales: 0870 084 1166
Fax: 01332 817778
information@quadrantdigital.co.uk



Bluefish 444 Europe Ltd, Joel Street Farm, Joel Street, Pinner, Middlesex. HA5 2PD. United Kingdom

TEL: +44 (0)20 8429 8345 FAX: +44 (0)20 8866 8207

EMAIL : info@bluefish444europe.com WEB : www.bluefish444europe.com